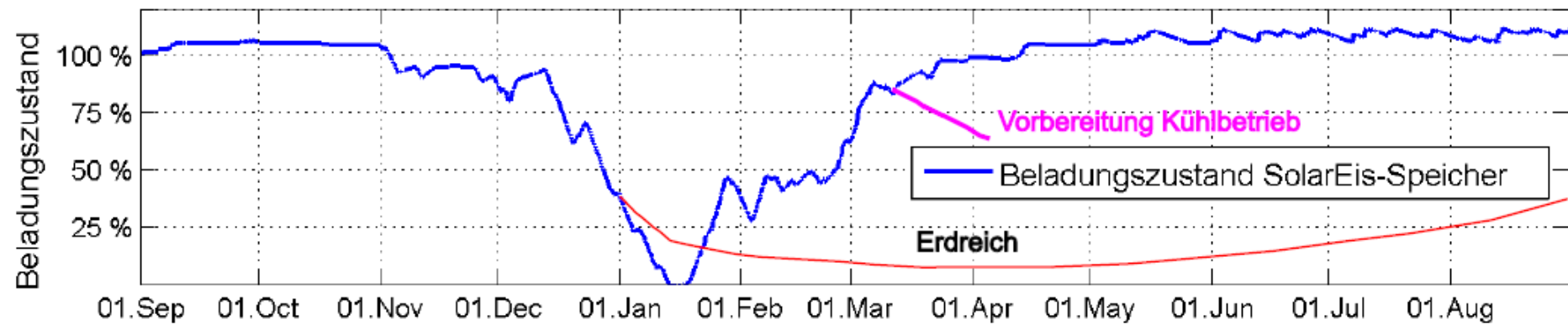
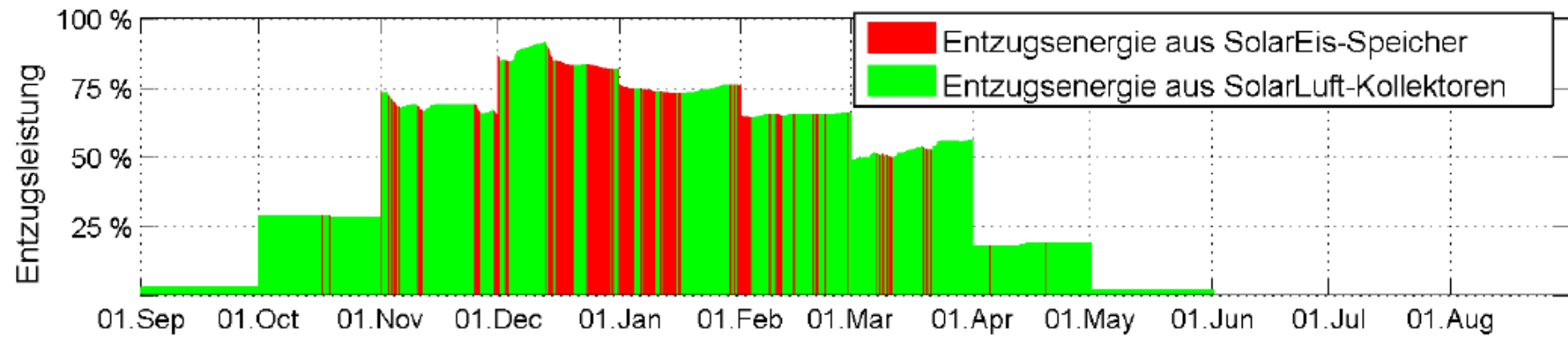
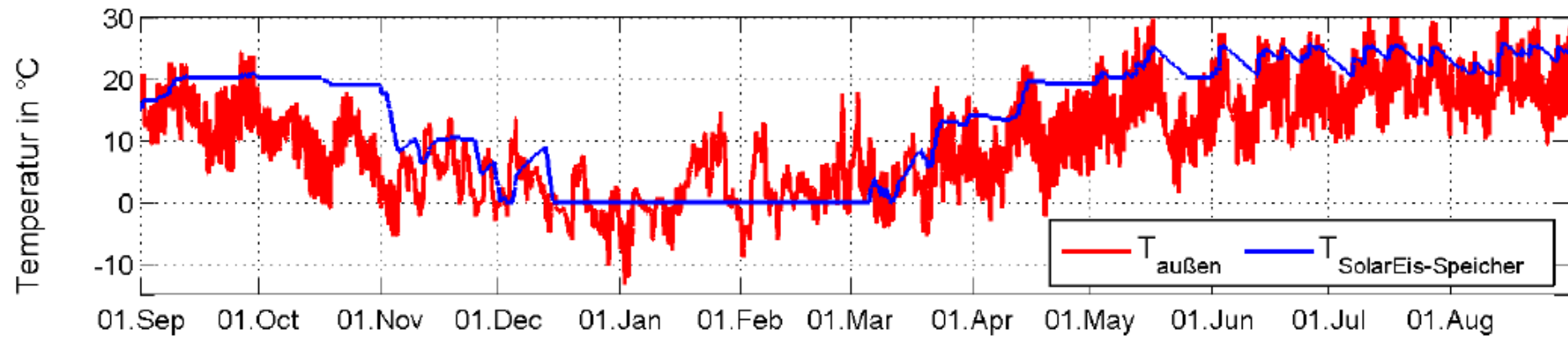


Standardsystem SE12; 6 kW; 4 SLK-S; Klimaregion TRY 4



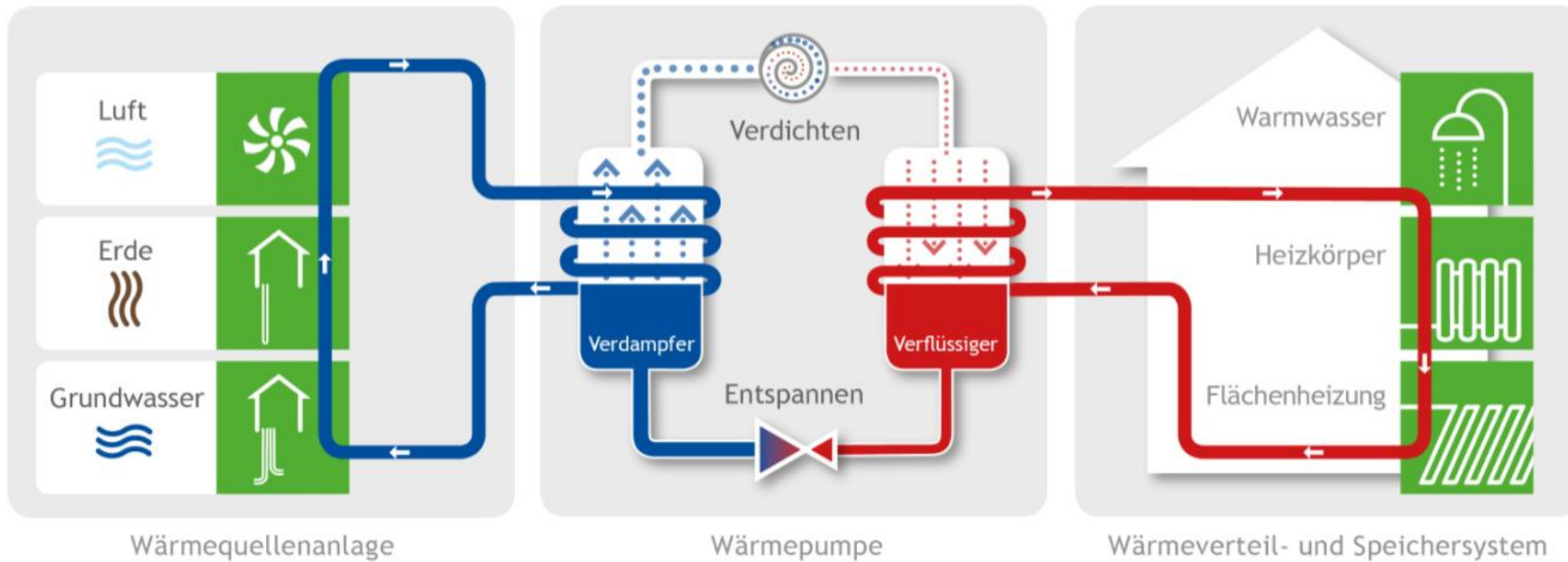


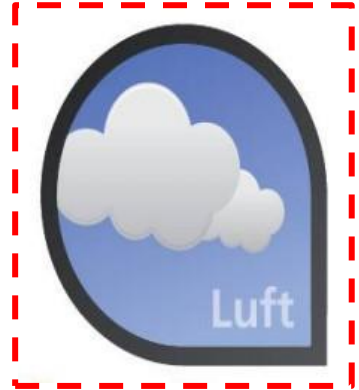
$$JAZ = \frac{\text{Wärmeenergie}}{\text{Antriebsenergie}}$$

Antriebsenergie

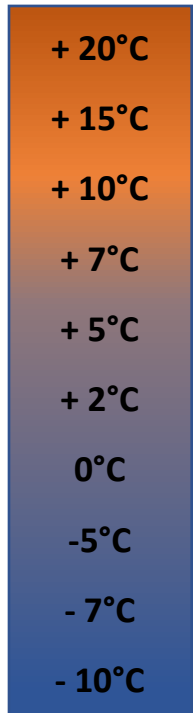
Umweltenergie

Wärmeenergie





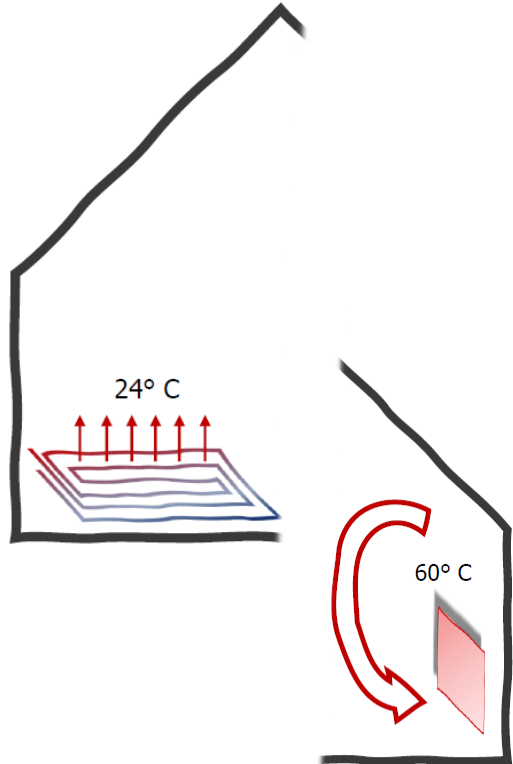
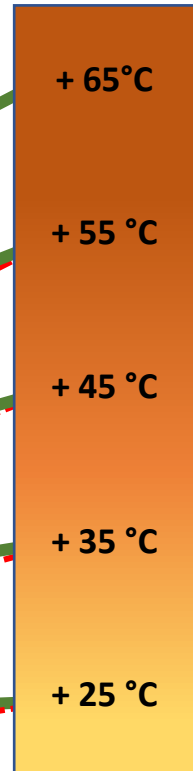
Umweltenergie



JAZ
5,5

Sole-Wärmepumpe

Luft-Wärmepumpe



Gebäude

Antriebsenergie

EFH

200 m², 8 kW, 17.600 kWh/a

